



WAXHAW CAMPUS

Adolescent Program
(Grades 7-9)
8:00am to 4:30pm

7118 McWhorter Road
Waxhaw, NC 28173
704-843-3335

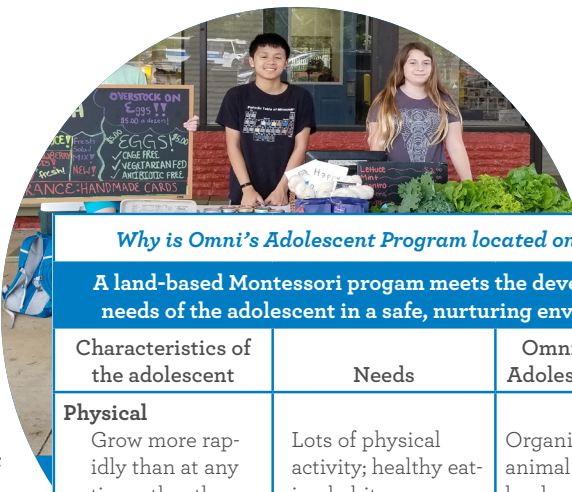


- Omni was founded in 1985 by a group of parents interested in providing authentic Montessori education for their children. In 2008, Omni launched its Middle School program on a 13-acre farm in Waxhaw, NC.
- Omni Montessori School is accredited by the Association Montessori Internationale (AMI), Southern Association of Independent Schools (SAIS), and Southern Association of Colleges and Schools (SACS).
- Omni's adolescent program integrates adult work and community service. Students also operate a small business. Classes include lectures, primary and secondary source reading, seminar discussions, research and formal writing, off-site visits, guests speakers, dramatic and artistic expression, experiential reproduction of historical settings, and dramatic presentations to the community.



*"The Waxhaw Campus is an academically challenging Middle School that gives the students an opportunity to evolve into unique individuals on their own terms. They get to test their adult wings in authentic ways, but with a sturdy safety net."
— Montessori parent*

www.omni-montessori.org



Omni Montessori School graduates are: *independent, self-aware, and inspired.*

- Omni's 9th year graduates transition easily to local public or private high schools – 50% choose private schools and 50% choose public schools.
- Omni alumni have graduated from local public or private high schools and have been accepted at their top choice colleges and universities. Schools in which our alumni have enrolled include:
 Bentley College
 College of Charleston
 Elon College
 Hampshire College
 Kalamazoo College
 NC State University
 Savannah College of Art and Design
 Southern Methodist University
 Tulane University
 University of North Carolina (Chapel Hill, Charlotte, Wilmington)
 University of Colorado (Boulder)
 University of Miami
 University of South Carolina
 University of Southern California
 Western Carolina University

Why is Omni's Adolescent Program located on a farm?

A land-based Montessori program meets the developmental needs of the adolescent in a safe, nurturing environment.

Characteristics of the adolescent	Needs	Omni Montessori Adolescent Program
Physical Grow more rapidly than at any time other than infancy; Change at different rates; an age of boundless energy	Lots of physical activity; healthy eating habits	Organic farming; animal husbandry; land conservation efforts; ample outdoor activities; menu and meal planning
Emotional Doubts, hesitations, violent emotions; a state of expectation; a lack of discipline; revolt against authority; increased sense of self	To strengthen confidence; to do meaningful work; to acquire usefulness beyond the self; to develop autonomy	Participating in a "microeconomy" by running farming businesses; contributing to the local community; self-governing community, and taking personal responsibility for decisions
Social Sensitive period for social awareness; peer group is first priority; a moral and ethical age	To build community; to contribute to a cause; to see themselves as valued members of a group; to build a value system	Building economic and ethical community outside the classroom; first-hand experience of interdependency of life on earth and microcosm of human society
Cognitive Tendency toward creative work; unexpected changes in intellectual capacity; difficulty maintaining concentration	To discover a variety of studies; to acquire flexible and inquiring habits of mind; to express creatively new interests, thoughts and emotions	The land provides opportunities for a variety of applied, integrated plans of work ("occupations") that require proficiency in all areas of study, from microbiology to economics

Education for Life